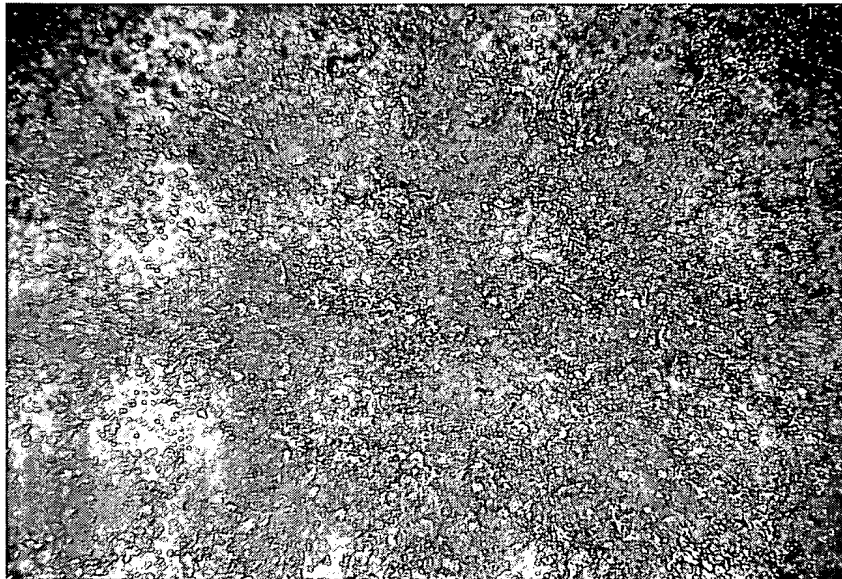


(x 150)

DEPOSITION SURFACE BY COARSE OXIDE POWDER
(Al_2O_3 - 43wt% ZrO_2)

FIG. 1

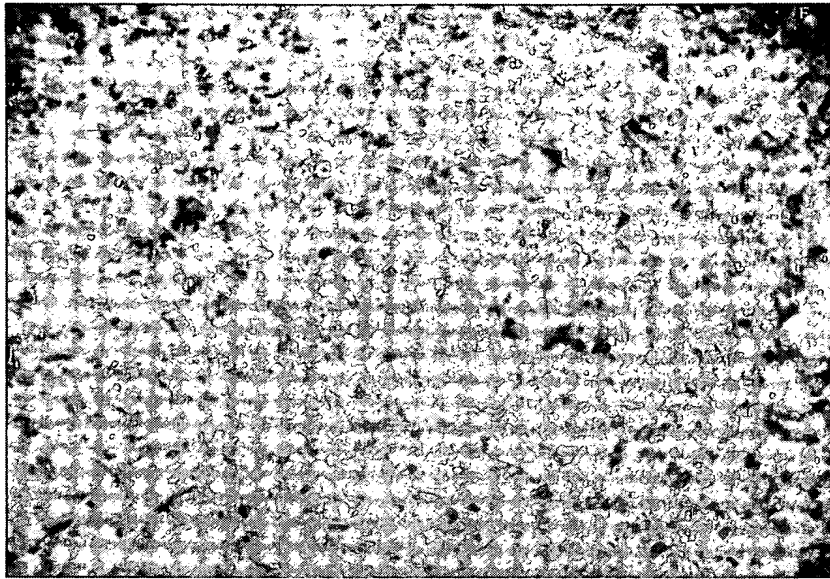


(x 150)

DEPOSITION SURFACE BY FINE OXIDE POWDER
(Al_2O_3 - 43wt% ZrO_2)

FIG. 2

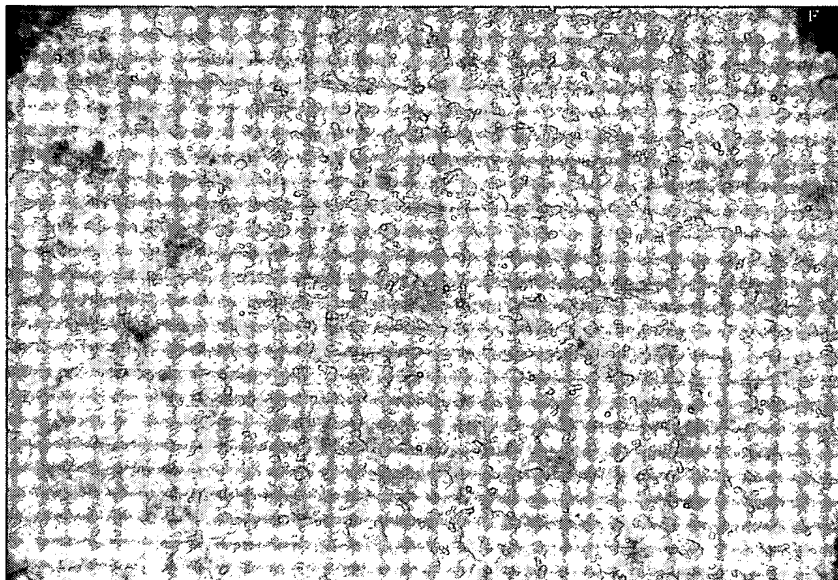
BEST AVAILABLE COPY



(x 150)

DEPOSITION SURFACE BY MIXTURE OF
FINE AND COARSE OXIDE POWDERS
(Al_2O_3 - 43wt% ZrO_2)

FIG. 3



(x 150)

FIG. 6

BEST AVAILABLE COPY

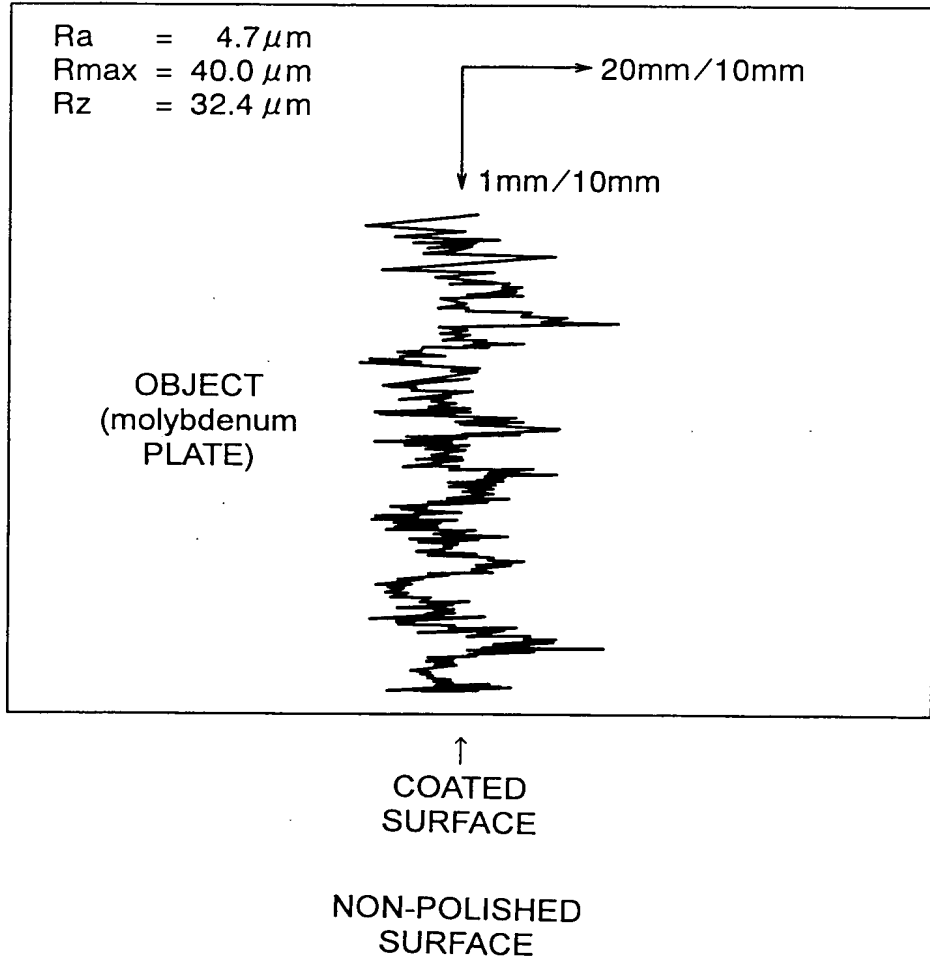


FIG. 4

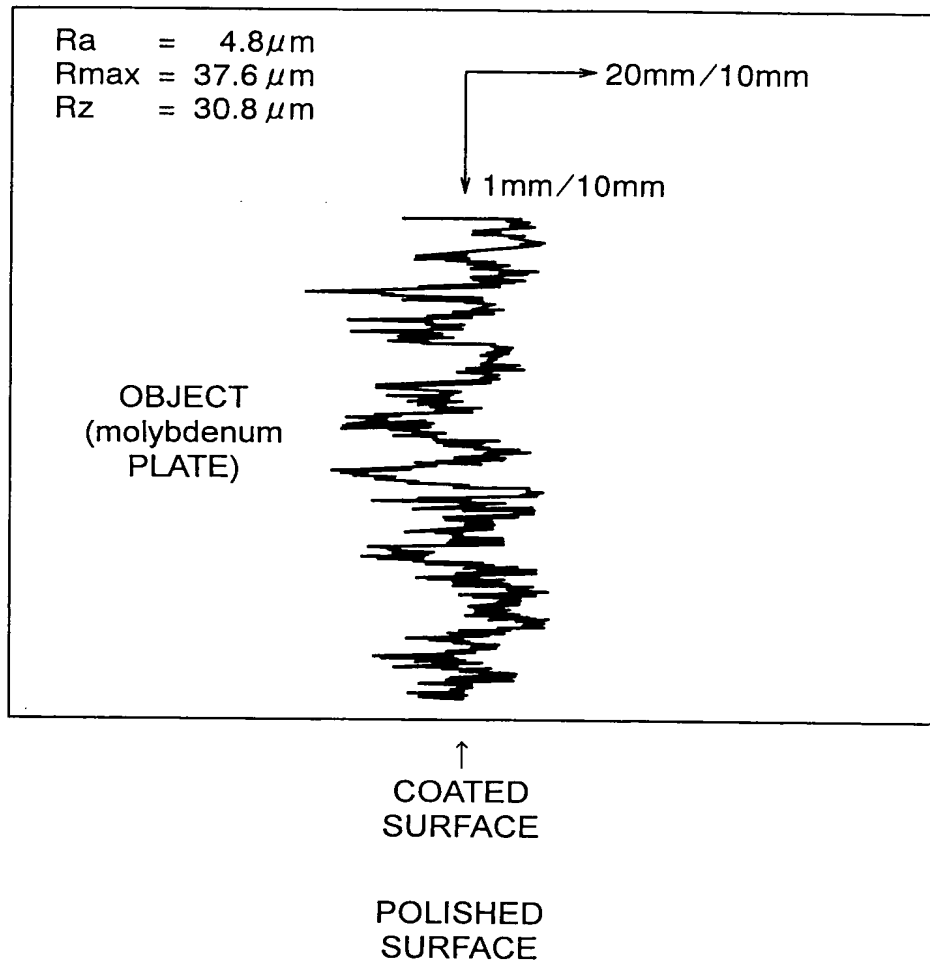
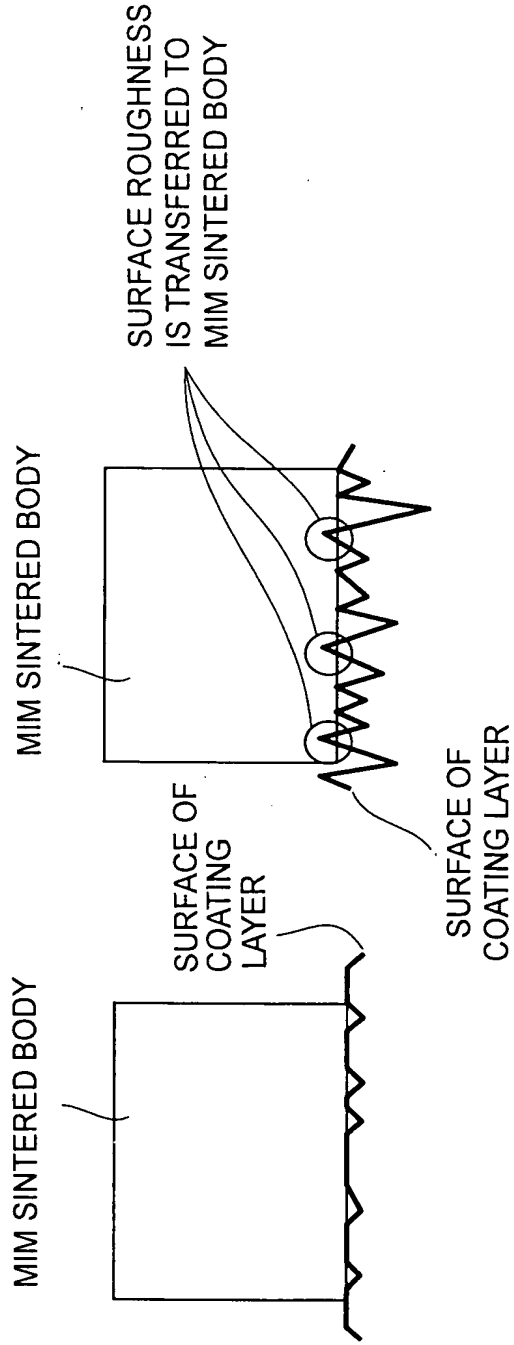


FIG. 5

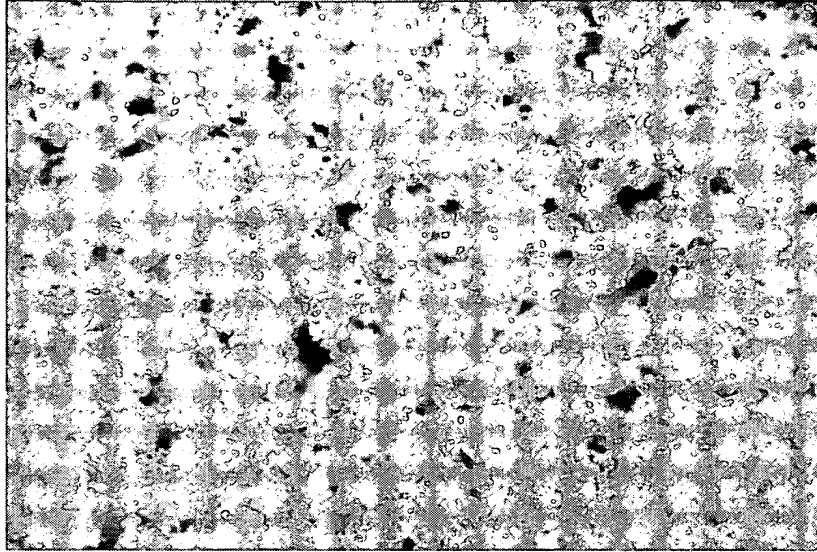


SAMPLE 8 OF
PRESENT
INVENTION

SAMPLE 17 ACCORDING TO
REFERENCE EXAMPLE

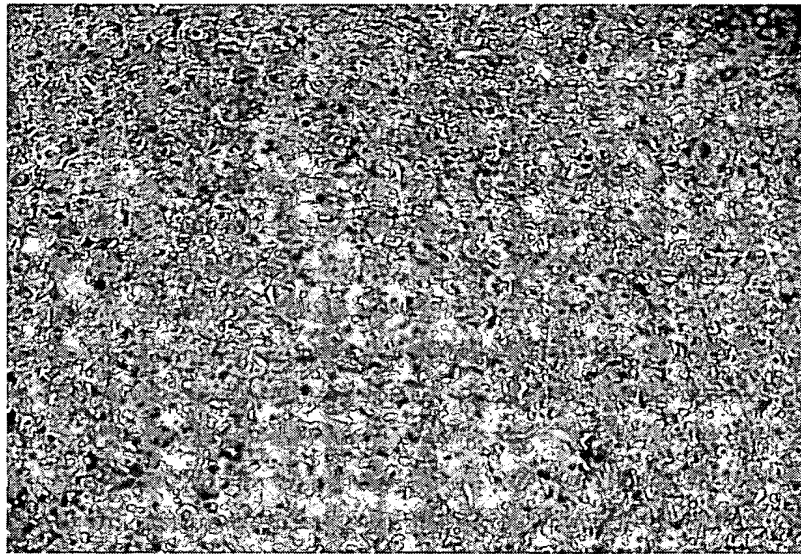
FIG. 7A

FIG. 7B



SURFACE OF Al_2O_3 AFTER HEAT TREATMENT AT 1800°C
WHEN POWDER GRAIN SIZE IS $75\mu\text{m}$

FIG. 8A



SURFACE OF Al_2O_3 AFTER HEAT TREATMENT AT 1800°C
WHEN POWDER GRAIN SIZE IS $1\mu\text{m}$

FIG. 8B

BEST AVAILABLE COPY

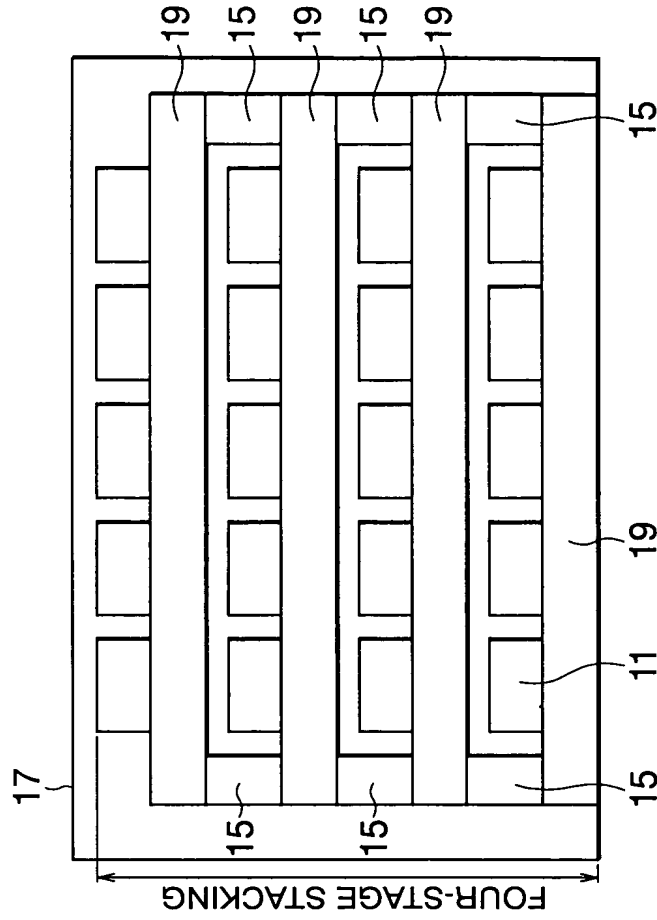


FIG. 9A

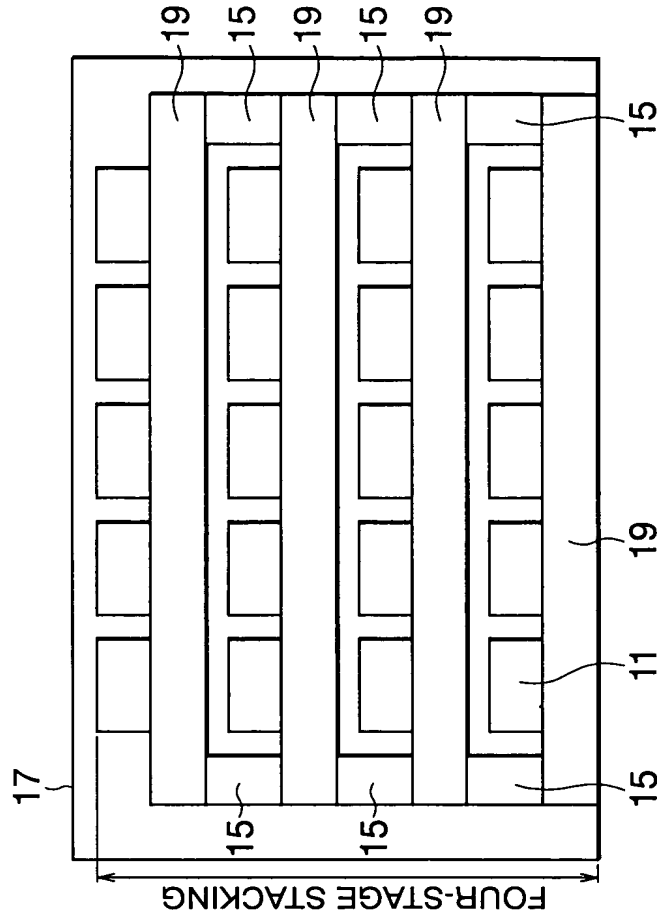


FIG. 9B